
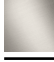


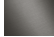


20 713 404 Product version from 1/1/2026



- 165mm projection
- fixed spout
- circular, air-enriched flow
- height of mixer 264 mm
- height up to aerator 173 mm
- hole diameter valve 32 mm
- hole diameter spout 35 mm
- rosette 60 x 60 mm
- max. flow 4.5 l/min
- lead-free
- This product can help a building meet the requirements of Green Building Rating Systems, e.g. LEED®, BREEAM®, DGNB

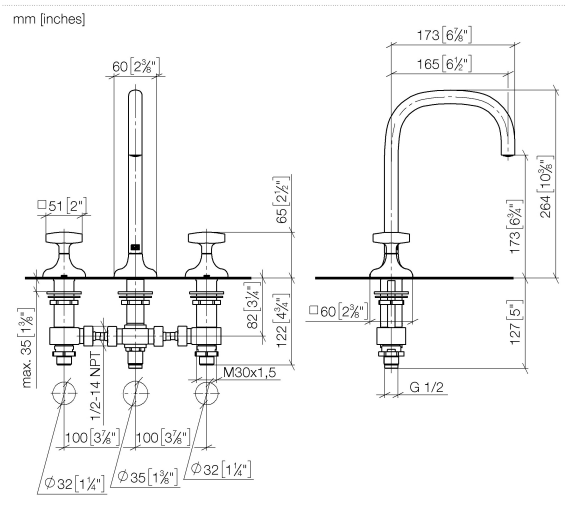
	Brushed Champagne (22kt Gold)	20 713 404-46
	Chrome	20 713 404-00
	Brushed Platinum	20 713 404-06
	Dark Chrome	20 713 404-19
	Brushed Durabronze (23kt Gold)	20 713 404-28
	Brushed Dark Brass (PVD)	20 713 404-39
	Brushed Bronze (PVD)	20 713 404-42
	Brushed Dark Bronze (PVD)	20 713 404-43
	Champagne (22kt Gold)	20 713 404-47
	Brushed Dark Platinum	20 713 404-99

Recommended miscellaneous

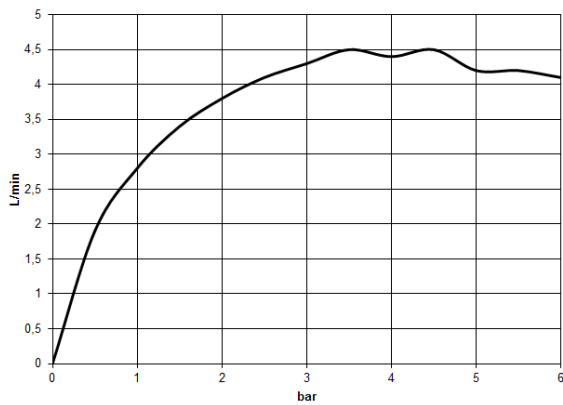


High pressure hoses - 12 506 970 90
 • 2x 3/8" x 1/2" x 500mm high pressure hose

20 713 404 Product version from 1/1/2026



Flow rate chart



Codes & Standards

DIN 4109

ISO 3822

Ü-Zeichen



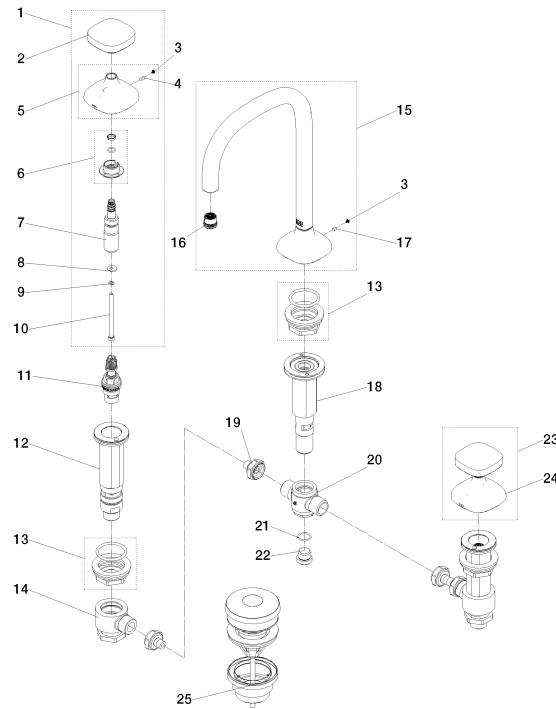
COYA Three-hole basin mixer - Brushed Champagne (22kt Gold)

COYA

20 713 404 Product version from 1/1/2026

Certificates and sustainability

EPD-DOR-20230287 LGA_39
-IBA1-EN
Environmental.prod
uct-declarat





COYA Three-hole basin mixer - Brushed Champagne (22kt Gold)

COYA

20 713 404 Product version from 1/1/2026

Spare parts list

No.	Item Number	Name	Quantity used	Delivery time
1	90 20 40 003 03-46	handle (hot)	1.00	30
14	90 28 22 466 00-46	spout	1.00	30
3	90 31 11 118 00 90	set	1.00	2
24	04 11 01 038 01-46	pop-up waste	1.00	-
Spare part can no longer be ordered, please order the replacement item				
12	04 17 11 058 53 90	side panel	2.00	2
13	04 17 11 023 10 90	distributor	2.00	2
5	90 27 40 004 01-46	rosette	1.00	30
11	04 23 10 032 78 90	fixing set	3.00	2
16	90 31 11 007 00 90	pin	1.00	2
6	90 14 15 005 00 90	ring	2.00	2
9	09 30 11 194 90	disc	2.00	2
2	90 20 40 003 02-46	handle	2.00	30
17	90 30 01 501 00 90	shaft	1.00	2
20	09 14 10 017 90	seal	1.00	2
21	09 24 04 021 10 90	nipple	1.00	2
19	90 17 11 020 10 90	distributor	1.00	2
22	90 20 40 003 04-46	handle (cold)	1.00	30
4	09 31 11 048 90	pin	2.00	2
18	04 30 04 096 00 90	hose	4.00	2
7	90 29 06 010 00 90	spindle	2.00	2
23	90 27 40 005 00-46	rosette	1.00	30
8	90 30 11 006 00 90	disc	2.00	2
15	09 29 03 125 90	aerator	1.00	2
10	90 30 30 254 00 90	screw	2.00	2