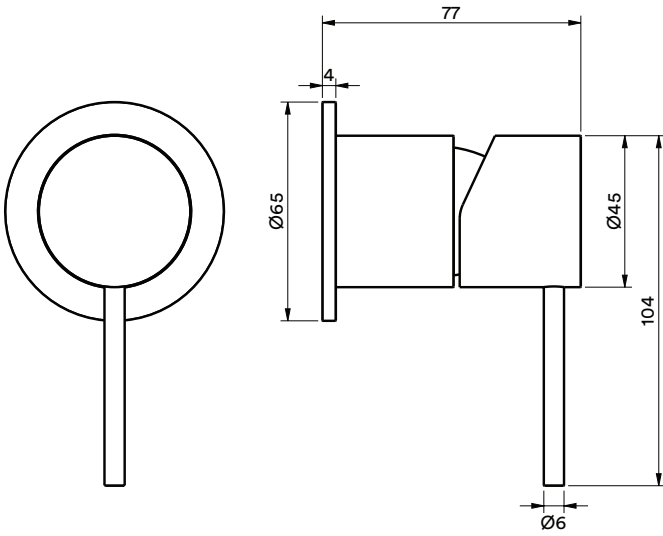


STEEL

FIN - SS - 002
Finish Set Mixer

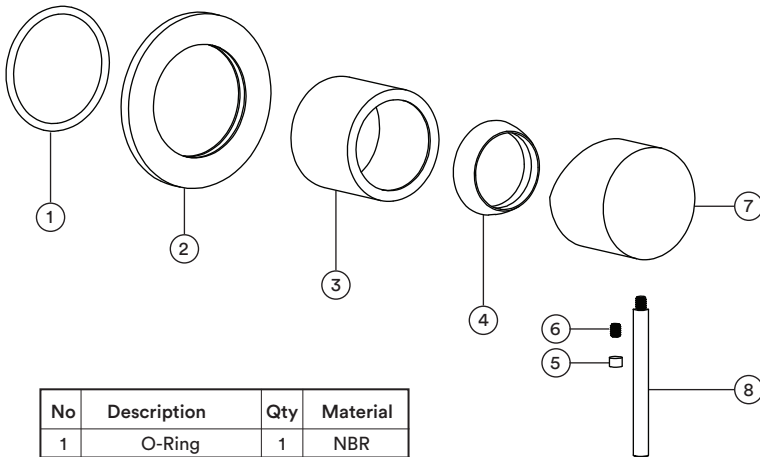
TECHNICAL SPECIFICATIONS



PRODUCT



DETAILED ASSEMBLY



No	Description	Qty	Material
1	O-Ring	1	NBR
2	Base	1	316L
3	Cartidge Cover	1	316L
4	Cartidge Nut	1	316L
5	Rubber Plug	1	NBR
6	Screw	1	SUS-304L
7	Mixer Handle	1	316L
8	Mixer Handlebar	1	316L

FEATURES

- 15 Year Warranty
- 316 Stainless Steel
- European Cartridge
- Flow rate : 23 Litres per minute @ 3 bar pressure.



WARRANTY

Refer to joansa.co.za for warranty terms & conditions.

CARE

Preparation:

Apply copper slip lubricant to prevent seizing of threaded fasteners.

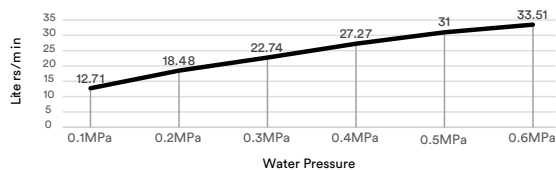
Cleaning:

- Remove dirt using clean water and a soft cotton cloth.
- Clean the stainless steel surface with:
 - Gentle liquid detergent.
 - Colourless glass cleaner.
 - Non-abrasive polishes.
- Dry and remove all cleaning material with a soft cotton cloth.

CERTIFICATION

JASWIC APPROVED.
SABS TESTED & APPROVED.

FLOW RATE



Stainless Steel
with a conscience

+27 (021) 510 0489
30 Royal Road, Maitland,
Cape Town. 7405. South Africa