

TARA Wall valve clockwise closing 1/2" - Brushed Platinum

TARA

36 607 882



- rosette Ø 55 mm
- head part with cut-to-length spindle and sleeve

	Brushed Platinum	36 607 882-06
	Chrome	36 607 882-00
	Platinum	36 607 882-08
	Dark Chrome	36 607 882-19
	Brushed Durabronze (23kt Gold)	36 607 882-28
	Matte Black	36 607 882-33
	Brushed Champagne (22kt Gold)	36 607 882-46
	Champagne (22kt Gold)	36 607 882-47
	Brushed Chrome	36 607 882-93
	Brushed Dark Platinum	36 607 882-99

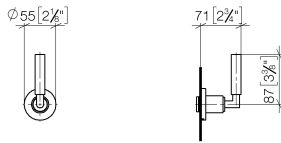
Required miscellaneous

- Wall valve 1/2" -** 35 607 970 90
- max. recess depth 145 mm
 - min. recess depth 85 mm



36 607 882

mm [inches]



Certificates

DVGW_DW-
6501DN0116.

WRAS_2011026.

IAPMO_4976 (1).

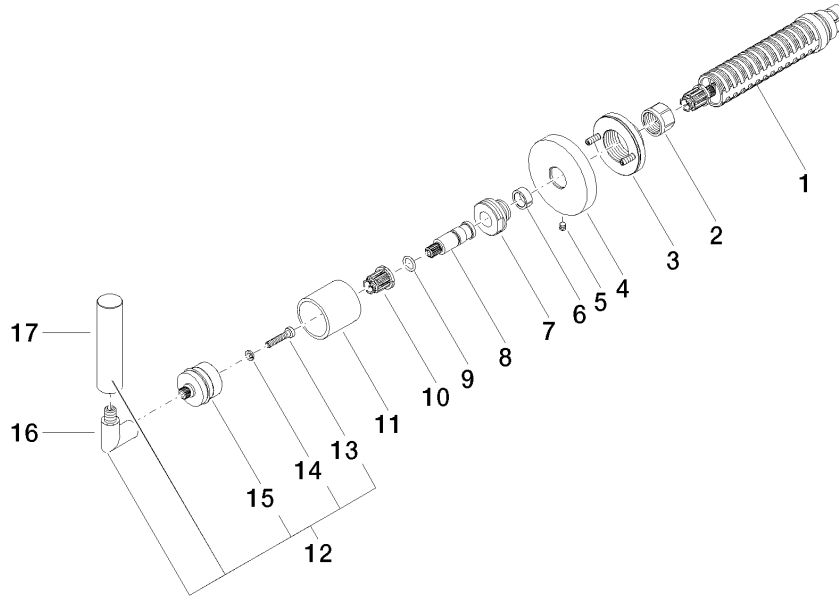
LGA_29931.

WRAS_2010066.

DVGW_DW-
6512DN0706.

LGA_29932.

36 607 882



Spare parts list

No.	Item Number	Name	Quantity used	Delivery time
1	90 90 03 143 00 90	top	1	2
2	90 23 30 023 00 90	nut	1	2
3	90 21 02 108 00 90	disc	1	2
4	09 27 89 115-06	rosette	1	10
5	90 31 11 007 00 90	pin	1	2
6	90 14 15 020 03 90	ring	1	2
7	09 24 05 002 90	nipple	1	2
8	09 29 06 022 90	spindle	1	2
9	90 14 10 060 00 90	seal	1	2
10	90 12 12 002 00 90	fixing cap	1	2
11	09 21 02 144-06	sleeve	1	10
12	04 20 88 052 00-06	handle	1	10
13	90 30 30 075 00 90	screw	1	2
14	90 30 11 029 00 90	disc	1	2
15	90 12 12 007 00-06	base	1	10
16	04 18 20 022 00-06	angle	1	10
17	09 20 88 052-06	handle	1	10